

# Method Services for Biopharma Workflows

Resources for method development, implementation, optimization, and troubleshooting



Ensure the best analytical and business outcomes for your biopharma workflows with personal, onsite guidance from Agilent application experts

Agilent  
**CrossLab**  
From Insight to Outcome



#### Operators not familiar with hardware or software?

Need troubleshooting help? We can enhance your team's application knowledge and keep your method operational.



#### Transferring your method or adding new method capabilities?

Let us help you optimize your method, so you can get the results you need in the most efficient way possible.



#### Having trouble putting a method into practice?

We'll work with you to implement a referenceable method based on application notes, USP method, instrument demo, publication, kit, or analyzer.



#### Limited method development experience?

We can research and develop a custom method suited to your laboratory's needs.

## Proven application services bundle for LC/Q-TOF workflows

Agilent CrossLab offers an application service bundle to help you implement proven biopharma workflows for LC/Q-TOF analysis.

This includes:

- A choice of Agilent LC/Q-TOF acquisition methods for intact and subunit analysis and/or peptide mapping
- A choice of manual sample prep and/or automated sample prep with Agilent AssayMap Bravo, if available in your lab
- Three to five days of dedicated, onsite assistance from an Agilent expert
- NIST mAb
- Polypropylene low-volume vials and snap caps
- Training guides with laboratory exercises and example data

Learn more:

[www.agilent.com/chem/method-applications-development](http://www.agilent.com/chem/method-applications-development)



## A Complete Solution for Biopharma Analysis

Support your entire biopharma testing workflow with best-in-class analysis solutions from a trusted source.

Rely on Agilent to provide all the instruments, software, standards, sample prep, columns, supplies, and support you need to simplify your workflow and your decision making.

Learn more:

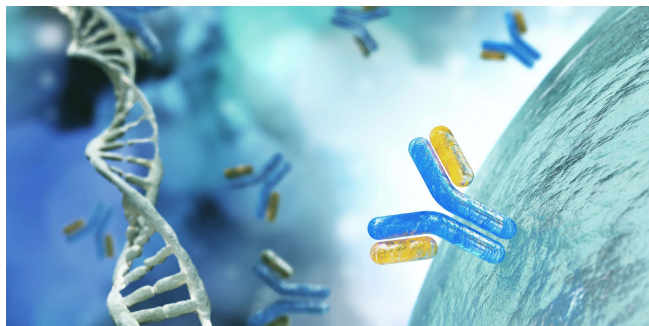
[www.agilent.com/chem/biopharma-analysis](http://www.agilent.com/chem/biopharma-analysis)

## Biologics discovery and development

At every stage of disease research and drug development, Agilent can provide you with the analytical answers you need to make the right choices. Count on Agilent to continually advance the state of the art for unambiguously identifying and validating protein biomarkers and in the discovery, identification, characterization, and quantitation of proteins or antibodies.

Learn more:

[www.agilent.com/chem/biopharma-biologics](http://www.agilent.com/chem/biopharma-biologics)



## Compliance assurance for regulated labs

Rely on Agilent CrossLab's global compliance experts to verify and qualify the performance of your laboratory instruments. Our industry-leading compliance services provide audit-ready software for paperless instrument qualification and reporting that simplifies deployment, enhances data integrity alignment, and enables your lab to focus on your science.

Learn more:

[www.agilent.com/chem/crosslab-compliance](http://www.agilent.com/chem/crosslab-compliance)



This information is subject to change without notice.

RA44238.52125

© Agilent Technologies, Inc. 2023  
Published in the USA, June 8, 2023  
5994-2956EN

## Industry-leading training with Agilent University

Keep your lab running efficiently with properly trained and prepared staff. At Agilent University, our mission is to give you innovative, flexible, and comprehensive lab training in the best format for you. Choose from classroom training with hands-on learning, customized on-site training at your location, virtual instructor-led training, and flexible online learning options.

Learn more:

[www.agilent.com/crosslab/university](http://www.agilent.com/crosslab/university)



### Recommended Agilent University Courses

LCMS-6500-2102cV4	Agilent 6500 Series Q-TOF LC/MS Techniques and Operation for Large Molecule Applications
LCMS-6500-2122v	Agilent 6500 Series Q-TOF LC/MS Calibration and Tuning
LCMS-6500-2130s	Analysis of Q-TOF LC/MS Data using MassHunter Qualitative Analysis